

Preparation guide

Necessary preparations for your participation in training

INNEO[®]

That's IT.

▲ **Preparation**

- Create PTC account
- Installation Amazon AppStream 2.0
- Check system requirements

▲ **On the training day**

- Starting the virtual computer (Amazon AppStream)
- Start Creo Parametric
- Access to training material

▲ **After the training - Training material**

- Access after the training
- Functions in the digital document

Preparation



create PTC account
Installation Amazon AppStream 2.0

Create PTC Account

How can I take part?

To take part in the training, you **must** have a PTC account.

Who must be the account holder?

The PTC account must be created on the mail address of the booked participant.

PTC account already available?

Test access, reset password if necessary.

No PTC account available?

Create an account - see next page.

IMPORTANT

These steps must be completed as long as you have access to your mailbox.

Select Basic account

PTC.com Accounts > Create New PTC eSupport Account

Create New PTC eSupport Account

All fields marked with a * are required.

*** First Name:**

*** Last Name:**

*** Title:**

*** E-mail:**

*** Confirm E-mail:**

*** Telephone:**

*** Company Name:**

*** Address:**

*** City:**

State/Province:

Zip/Postal Code:

*** Country/Region:**

*** Preferred Language**

I would like to receive PTC product and services related e-mail: Yes No

*** Password:**

*** Confirm Password:**

PTC Security Challenge

Please enter the underlined numbers only, in order: 830711

PTC collects, transfers and uses your data in accordance with PTC's [Privacy Policy](#).
By continuing you agree that you have read and agree with our Privacy Policy.

Basic Account: A Basic Account provides access to subscription-based email, such as the PTC Express newsletter, free trial downloads and easy registration for events and webcasts.

If you, or your company, have purchased a Global Support agreement with PTC please select the "New Customer" tab instead.

IMPORTANT

Please enter your company email address or the email address with which you are registered for the training and NO capital letters

Password min. 8 characters, no special characters

click to create account

By creating an account, you confirm the transfer of data to PTC.

Installation Amazon AppStream 2.0

The installation of Amazon AppStream 2.0 is **recommended**, but not essential. Browser access is also possible.

[Download Amazon AppStream 2.0](#)

Installation (or browser access) is necessary for **online training** or training **in your company**.

The Amazon AppStream needs to be installed in the **user directory** and not as admin.

At least **Windows 8** is a requirement.

You will find further information on the next slide or here: [Setup Amazon AppStram 2.0](#)



Download preferred

Browser access is possible

Installation Amazon AppStream 2.0



Check system requirements

Please check the system requirements in **advance** with the help of your **internal IT**.

Accessing Student Guides Through Vitrium



PTC University uses the digital rights management vendor Vitrium to provide students access to view and print student guides through a web browser.

What browser should I use?

Vitrium supports the latest stable version of each browser. This does not include beta or dev releases.

Trouble loading content?

Proxy servers and firewalls could prevent content from loading correctly in the web viewer. In order to resolve these issues, follow steps below.

Proxy server required configuration changes:

1. The proxy **MUST** allow direct communication
2. With the DNS address
 - <https://protectedpdf.com/>
 - <http://protectedpdf.com/>
 - <https://api.protectedpdf.com/>
3. On ports 80/443

Firewall required configuration changes:

1. Remove any blocks in Norton or other firewall software for
 - <https://protectedpdf.com/>
 - <http://protectedpdf.com/>
 - <https://api.protectedpdf.com/>
2. The firewall **MUST** allow communication with
 - <https://protectedpdf.com/>
 - <http://protectedpdf.com/>
 - <https://api.protectedpdf.com/>

 [IP address and port requirements](#)

 [System requirements AppStream 2.0](#)

 [Access for digital documents in Vitrium](#)

IP Address and Port Requirements for AppStream 2.0 User Devices

[PDF](#) | [RSS](#)

AppStream 2.0 users' devices require outbound access on port 443 (TCP) and port 8433 (UDP) when using the internet endpoints, and if you are using DNS servers for domain name resolution, port 53 (UDP).

- Port 443 is used for HTTPS communication between AppStream 2.0 users' devices and streaming instances when using the internet endpoints. Typically, when end users browse the web during streaming sessions, the web browser randomly selects a source port in the high range for streaming traffic. You must ensure that return traffic to this port is allowed.
- Port 8433 is used for UDP HTTPS communication between AppStream 2.0 users' devices and streaming instances when using the internet endpoints. This is currently only supported in the Windows native client. UDP is not supported if you are using VPC endpoints.

Note

Streaming through interface VPC endpoints requires additional ports. For more information, see [Creating and Streaming from Interface VPC Endpoints](#).

- Port 53 is used for communication between AppStream 2.0 users' devices and your DNS servers. The port must be open to the IP addresses for your DNS servers so that public domain names can be resolved. This port is optional if you are not using DNS servers for domain name resolution.

System Requirements and Considerations

The AppStream 2.0 client requires the following:

- Follow the principle of least privilege when launching the AppStream 2.0 client. The client should only run with the level of privilege required to complete a task.
- Operating system — Windows 7, Windows 8, or Windows 10 (32-bit or 64-bit)
- Microsoft Visual C++ 2015 Redistributable or later. For information about the latest Visual C++ redistributable packages for Visual Studio 2015, 2017, and 2019, see [The latest supported Visual C++ downloads](#) in the Microsoft Support documentation.
- RAM — 2 GB minimum
- Hard drive space — 200 MB minimum
- Local administrator rights — Used if you want to install the AppStream 2.0 USB driver for USB driver support.
- An AppStream 2.0 image that uses the latest AppStream 2.0 agent or agent versions published on or after November 14, 2018. For information about AppStream 2.0 agent versions, see [AppStream 2.0 Agent Release Notes](#).
- The Windows native client supports UDP as well as the default TCP-based streaming over NICE DCV. For more information about NICE DCV and UDP, see [Enabling the QUIC UDP transport protocol](#). If you want to enable UDP streaming for the Windows native client, make sure you meet the following requirements. If you don't meet the following requirements, the Windows native client will default back to TCP-based streaming.
 - Your Stack has been configured to prefer UDP in the **Streaming Setting Experience** section. For more information, see [Create an AppStream 2.0 Fleet and Stack](#).
 - Your network allows UDP traffic on port 8433 for the AWS IP Ranges. For more information, see [AWS IP address ranges](#).
 - You are using the latest base image when creating your fleet. For more information, see [AppStream 2.0 Base Image and Managed Image Update Release Notes](#).
 - Your end users are using the latest Windows native client. For more information, see [Supported clients](#).

Note

We recommend an internet connection for AppStream 2.0 client installation. In some cases, the client can't be installed on a computer that is not connected to the internet, or USB devices might not work with applications streamed from AppStream 2.0. For more information, see [Troubleshooting AppStream 2.0 User Issues](#).

On the training day

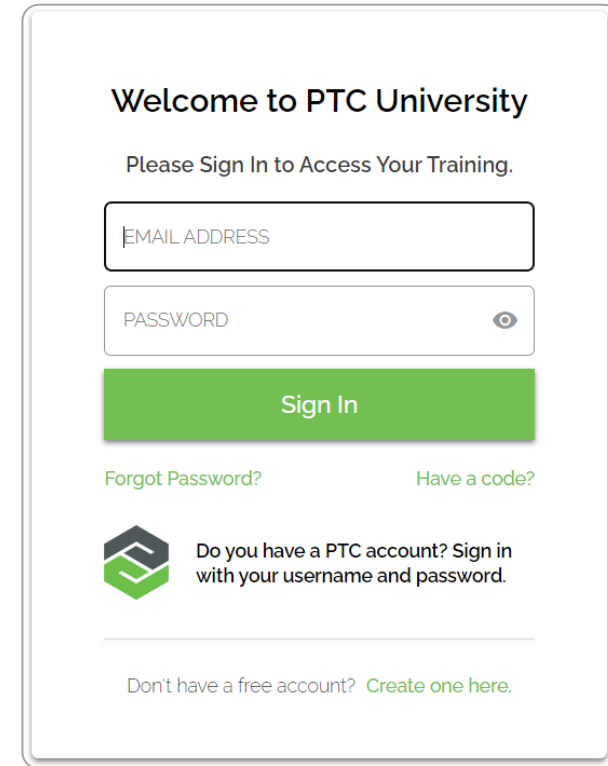
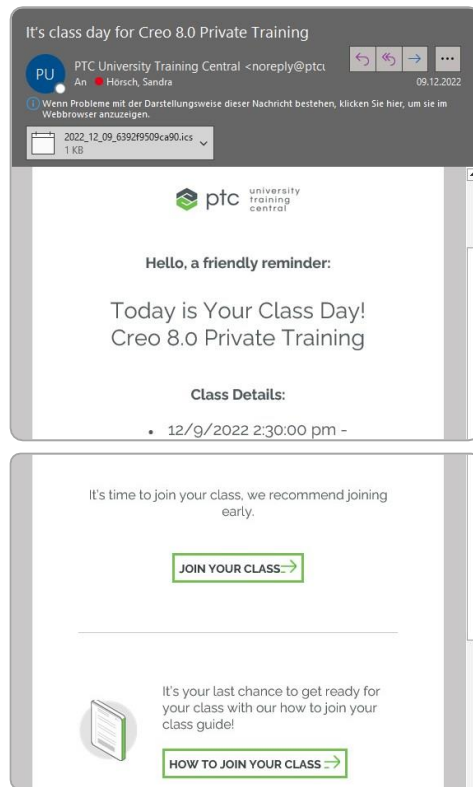
Starting the virtual computer (Amazon AppStream)
Start creo Parametric

Starting the virtual computer (Amazon AppStream 2.0)

On the **first day of the training** in the morning (or the evening before) you will receive this email.

The link "Join your Class" leads to <https://class.ptcu.com>

If you are training at an INNEO training centre, you **do not** need this email.



Log in to your **PTC account** at <https://class.ptcu.com>

Step 1: Select class

Step 1
SELECT CLASS

Step 2
ENTER CLASS

Step 3
ACCESS TRAINING GUIDE

Step 4
CONNECT TO VIRTUAL MACHINE

Step 1 Select Class

Welcome! Select an upcoming class from the list below and follow the next steps to successfully join your class. Your classes will appear 24 hours prior to the start time.

Upcoming Classes

Can't find your class? [Try refreshing](#)

<input checked="" type="radio"/> Inneo GMBH - Creo Private - 15th of April 2024 (ID B7YJ6Z6) (B7YJ6Z6)	Apr 16, 09:00 AM (CEST) 4 Hours	Instructor-Led	✓
<input type="radio"/> Inneo GMBH - Creo Private - 15th of April 2024 (ID B7YJ6Z6) (B7YJ6Z6)	Apr 17, 09:00 AM (CEST) 4 Hours	Instructor-Led	✓

Completed Classes

Link from email:
<https://class.ptcu.com/>

Here you can see the training that is taking place. For trainings lasting several days, please select the corresponding date.

Step 3: Access Training Guide

Step 1
SELECT CLASS

Step 2
ENTER CLASS

Step 3
ACCESS TRAINING GUIDE

Step 4
CONNECT TO VIRTUAL MACHINE

Step 3
Access your training guide

Our training guide provides courseware reference material that outlines the functional areas and learning path for each course. Trainees will learn conceptual topics and perform exercises that reinforce those concepts.

Class Selection

Inneo GMBH - Creo Private - 15th of April 2024 (ID B7YJ6Z6) Apr 16, 09:00 AM (CEST) | 4 Hours Instructor-Led

Access Class Materials:

[Student Guide for Private Training](#) ->

Need assistance? Email us at trainingcentral@ptc.com ->

← PREVIOUS 1 — 2 — 3 — 4 NEXT →

Link from email:
<https://class.ptcu.com/>

You can access your training documents here.



Step 4: connect to virtual machine

Step 1
SELECT CLASS

Step 2
ENTER CLASS

Step 3
ACCESS TRAINING GUIDE

Step 4
CONNECT TO VIRTUAL MACHINE

Step 4
Connect to your virtual machine

Our virtual machines, also referred as VM, always support the latest product version and require no local installation. During class, you will need access to your virtual machine to participate in hands-on exercises and apply what you are learning in real time. Your virtual machine will be available 30 minutes prior to the start of class time.

Class Selection

Inneo GMBH - Creo Private - 15th of April 2024 (ID B7YJ6Z6) Apr 16, 09:00 AM (CEST) | 4 Hours Instructor-Led

Select your Country

Germany ✓

GENERATE VM

Manage VMs →

Need assistance? Email us at trainingcentral@ptc.com →

← PREVIOUS

1 2 3 4

Link from email:
<https://class.ptcu.com/>

Here you define the settings of the virtual machine. Instructions on the next two slides.

Step 4: connect to virtual machine

Link from email:
<https://class.ptcu.com/>

Step 1 SELECT CLASS Step 2 ENTER CLASS Step 3 ACCESS TRAINING GUIDE Step 4 CONNECT TO VIRTUAL MACHINE

Step 4

Connect to your virtual machine

Our virtual machines, also referred as VM, always support the latest product version and require no local installation. During class, you will need access to your virtual machine to participate in hands-on exercises and apply what you are learning in real time. Your virtual machine will be available 30 minutes prior to the start of class time.

Class Selection

Inneo GMBH - Creo Private - 15th of April 2024 (ID B7YJ6Z6) Apr 16, 09:00 AM (CEST) | 4 Hours Instructor-Led

Select your Country

- Germany ✓
- Australia
- Brazil
- Canada
- China
- Denmark
- France
- Germany
- India
- Italy
- Japan
- South Korea
- Norway
- Russia
- Sweden
- Switzerland
- Taiwan
- United Kingdom
- United States
- South Africa

GENERATE VM Manage VMs →

central@ptcu.com →

1 — 2 — 3 — 4

Please select your country.

click "Generate VM"

Your Class Environment

We're working to generate your class environment, please wait...
It may take 2-10 minutes for your environment to load. Thank you for your patience.

Manage VMs →

✓ Cloud virtual machine is ready for use! Country Selection: Germany (DE) Manage VMs →



Step 4

Connect to your virtual machine

Our virtual machines, also referred as VM, always support the latest product version and require no local installation. During class, you will need access to your virtual machine to participate in hands-on exercises and apply what you are learning in real time. Your virtual machine will be available 30 minutes prior to the start of class time.

Class Selection

Inneo GMBH - Creo Private - 15th of April Apr 16, 09:00 AM (CEST) | 4 Hours Instructor-Led
2024 (ID B7YJ6Z6)

✔ Cloud virtual machine is ready for use! 🌐 Country Selection: Germany (DE)

[Manage VMs](#) →

Please open VM or copy and paste the below URL into a web browser. We recommend the latest version of Google Chrome or Mozilla Firefox to be used. Once connected, launch your PTC Product.

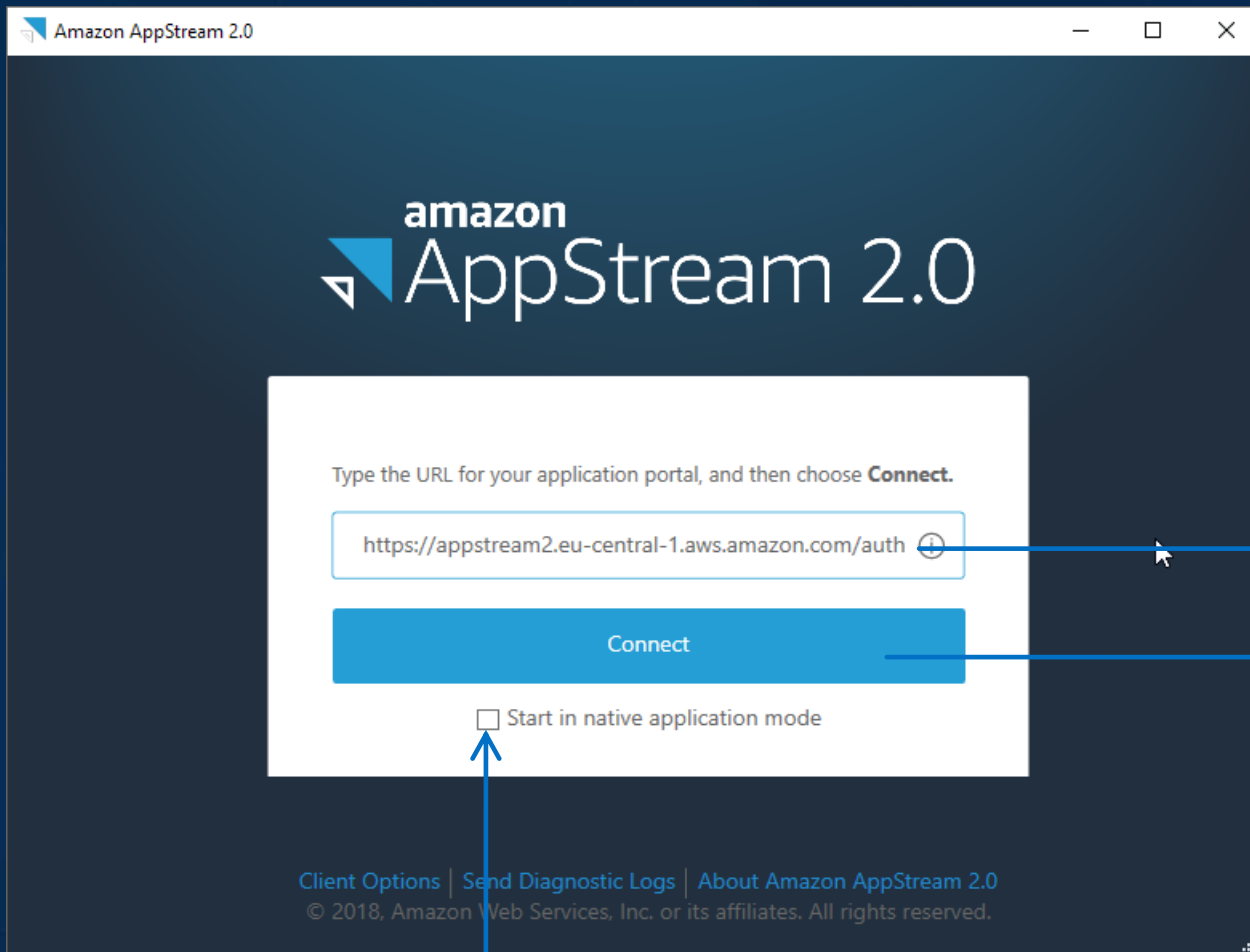
<https://appstream2.eu-central-1.aws.amazon.com/authenticate?param...>

OPEN VM

Need assistance? Email us at trainingcentral@ptc.com →

copy link for Amazon AppStream.

without Amazon AppStream: open link via browser.



Do NOT activate

Insert the link

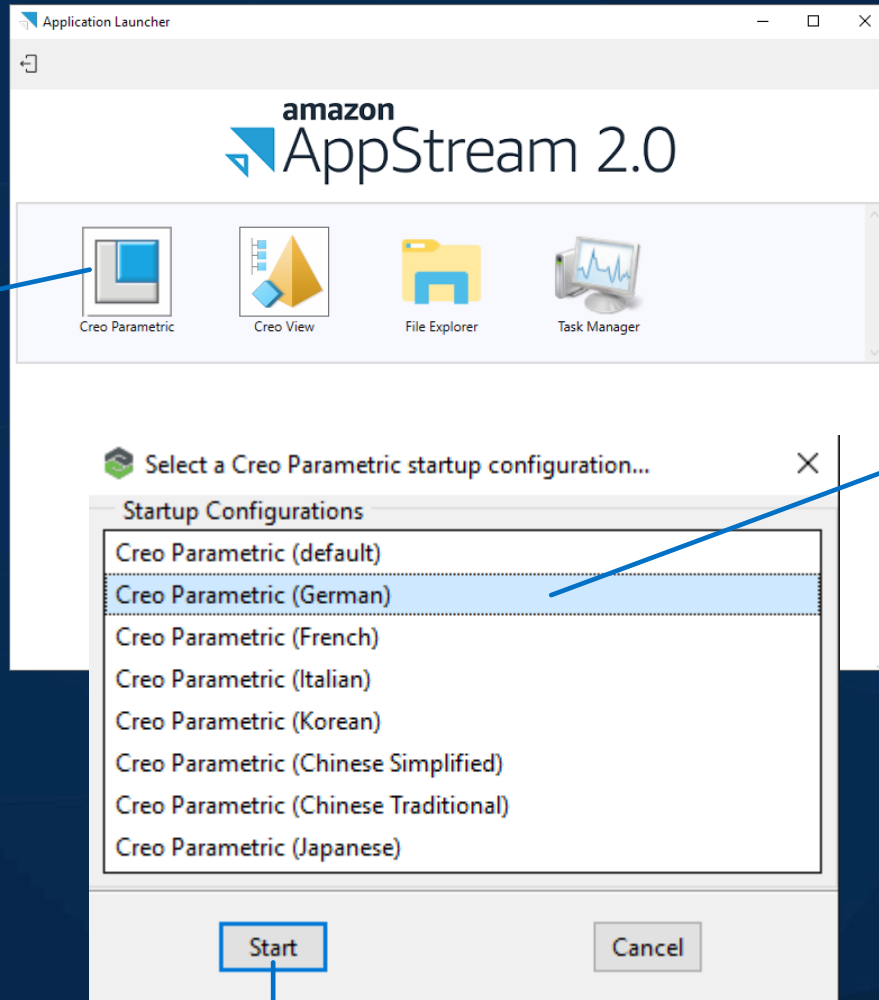
connect

Which training
do you join?

- Creo Parametric
[click here](#)
- PLM Windchill
[click here](#)
- ThingWorx
[click here](#)

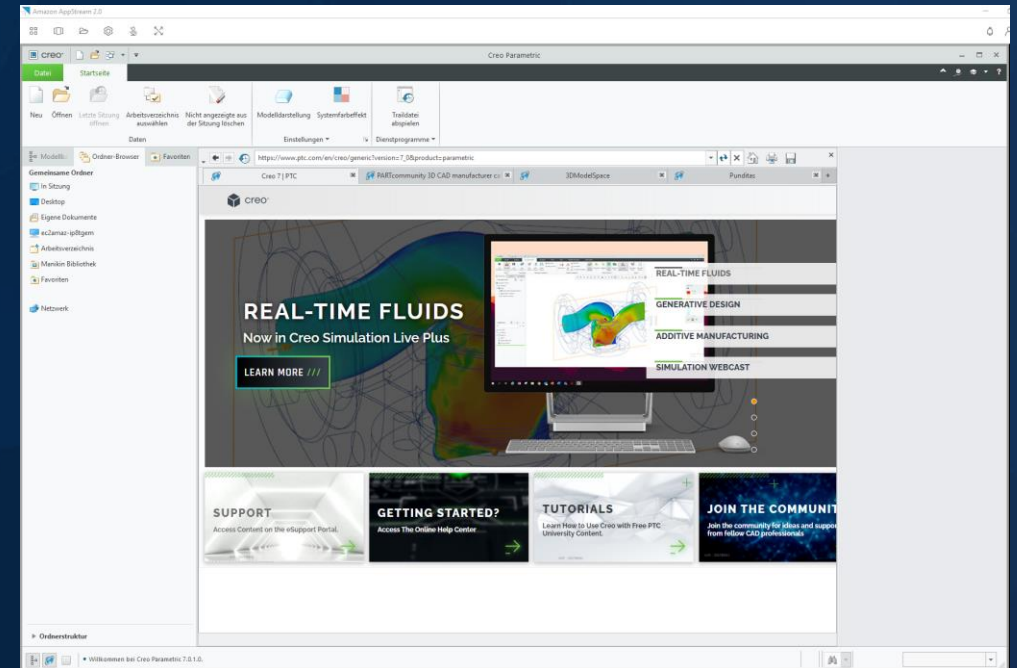
Creo Parametric

Select creo Parametric

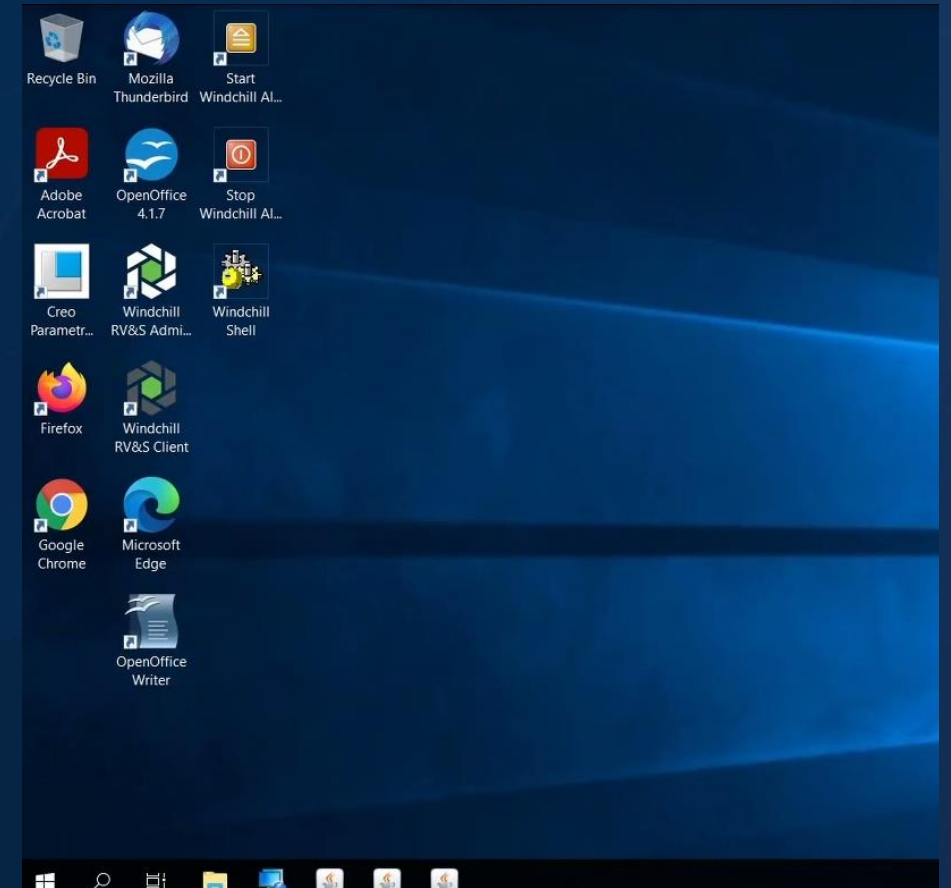
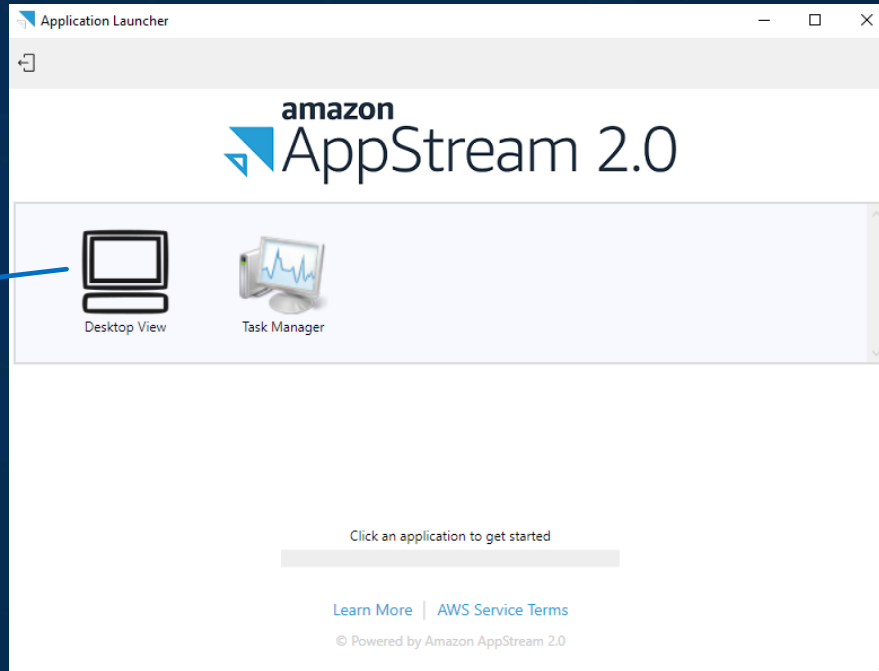


Select language

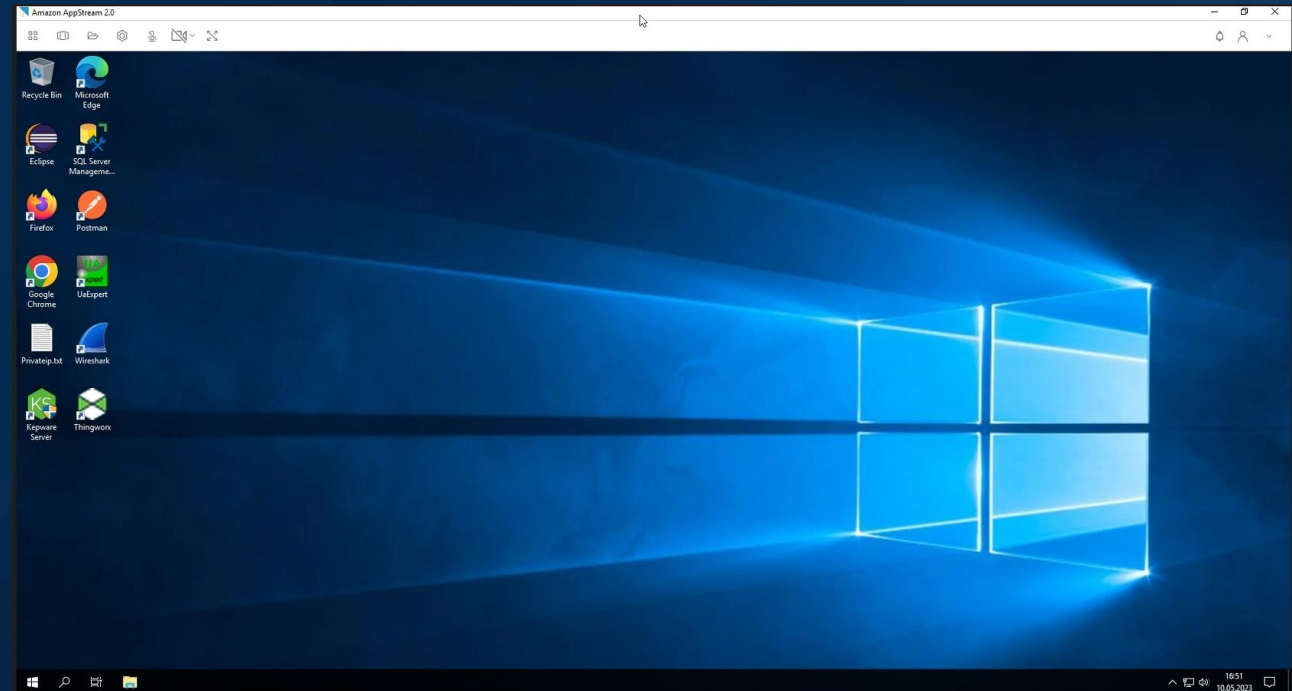
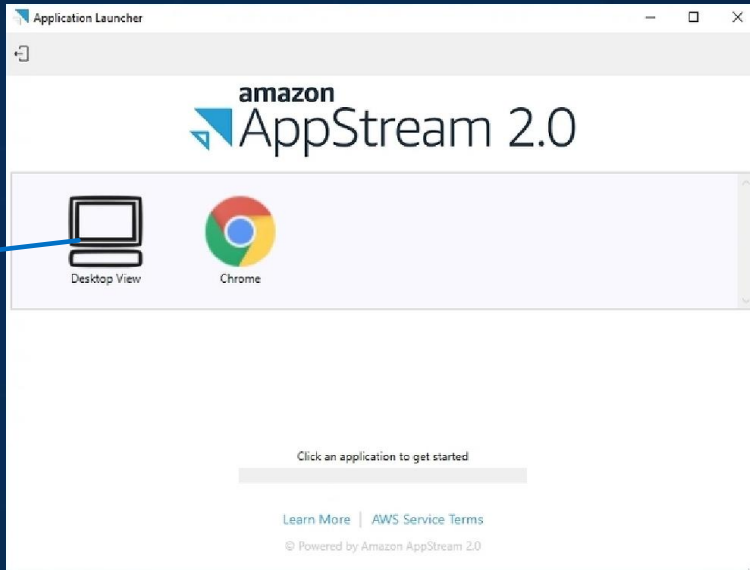
Start creo Parametric



Select Desktop
View



Select Desktop
View



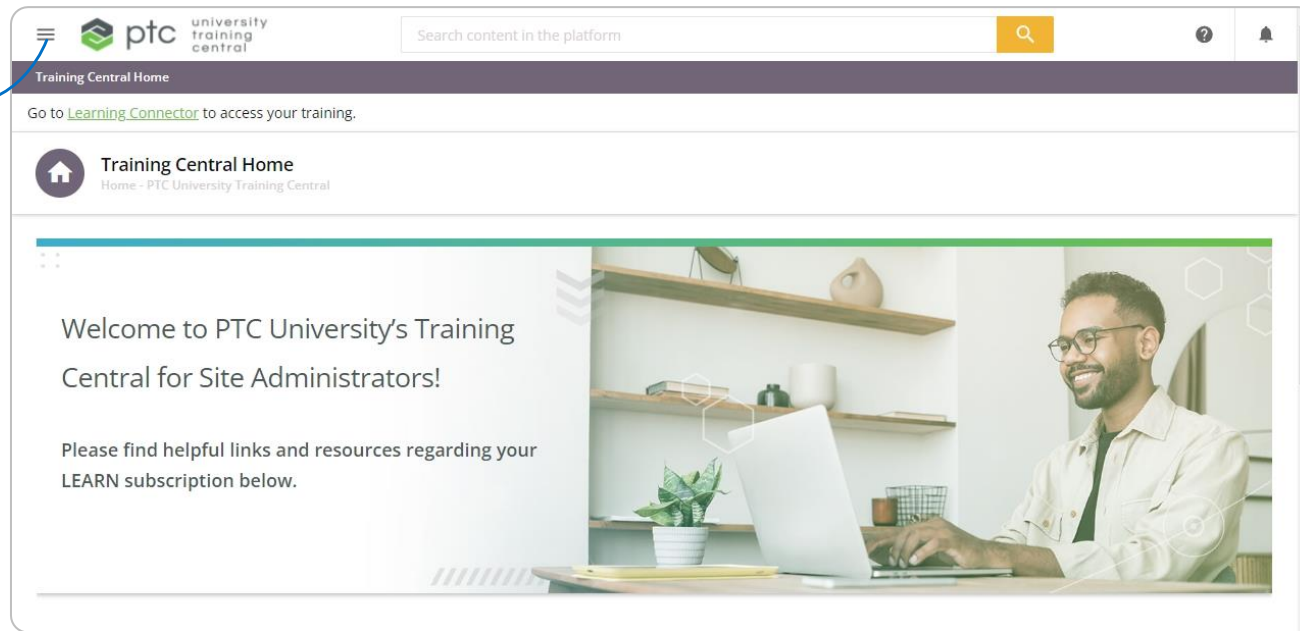
After the training - training materials

Access after training
Functions in the digital document

Access after Training

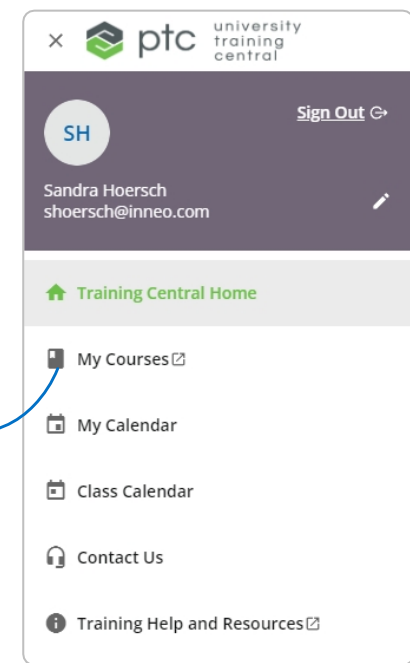
Training Central is PTC's **Learning Management System**. Here you can find all completed and future ATP trainings.

select the menu

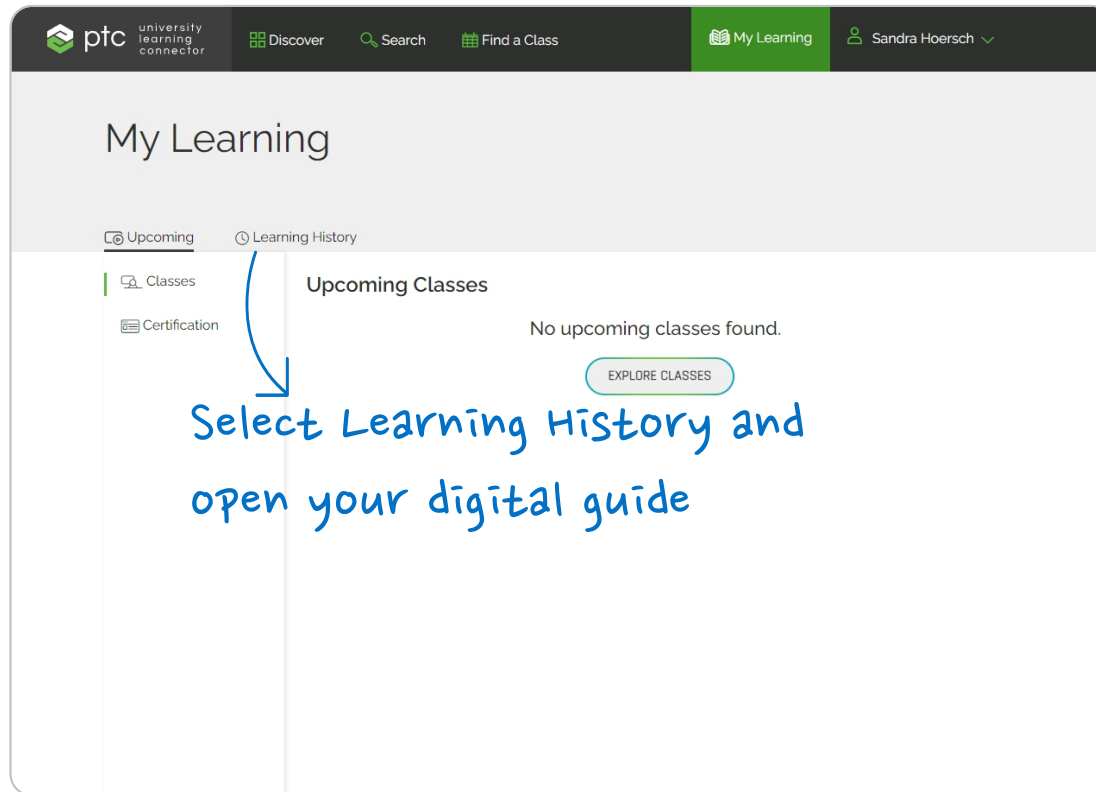


Link to LMS:
<https://trainingcentral.ptc.com/pages/22/training-central-home>

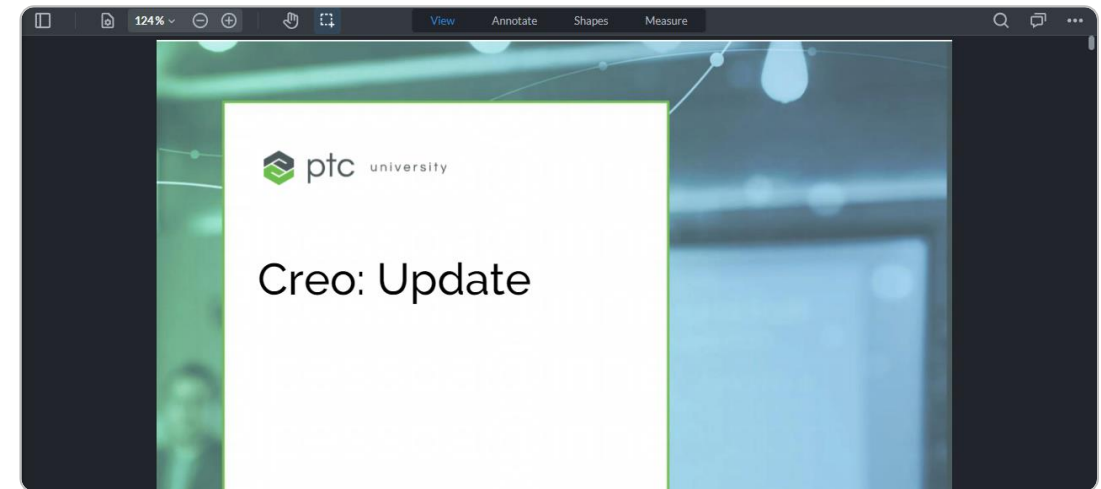
Select My courses



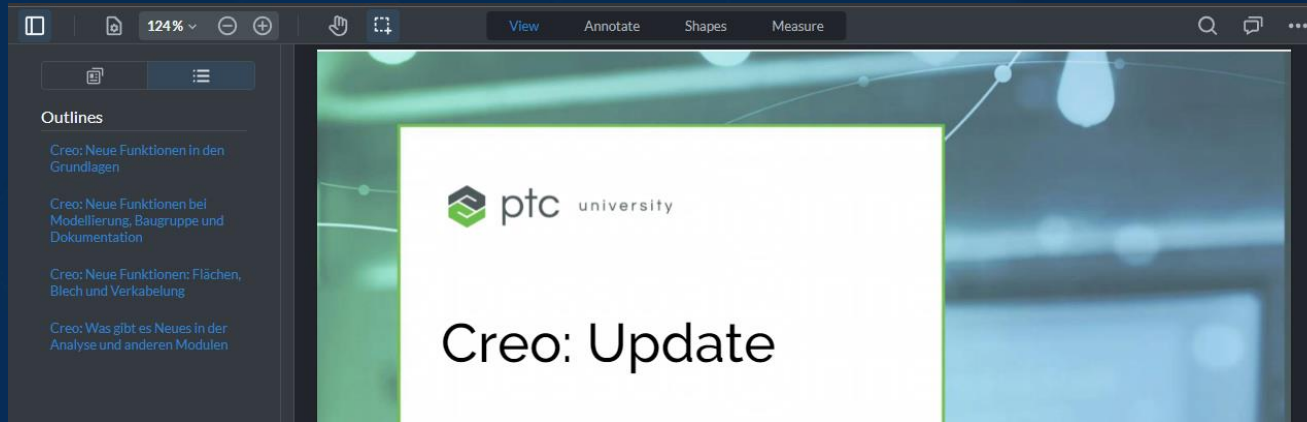
Access after Training



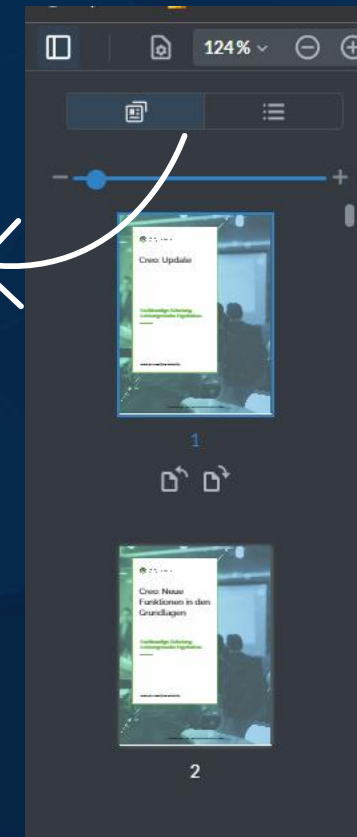
Link to LMS:
<https://trainingcentral.ptc.com/pages/22/training-central-home>



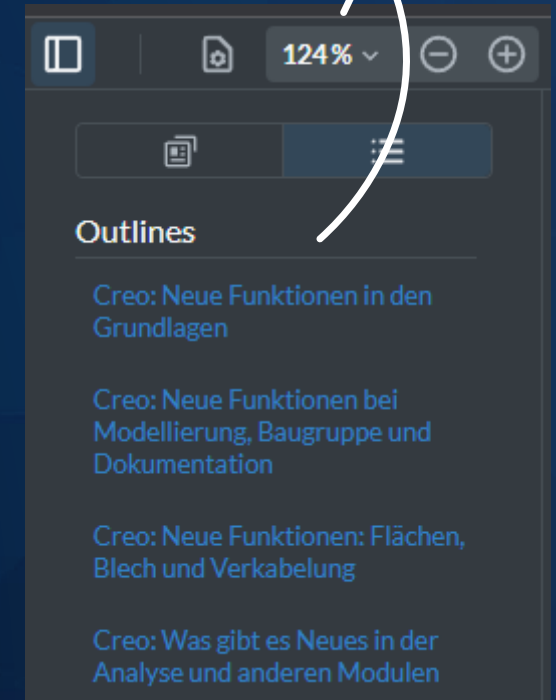
Functions in the digital document



Here you can switch between the view and the modules.

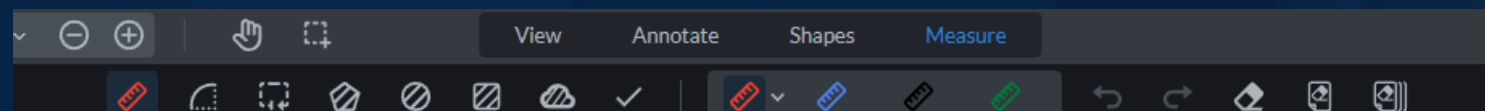
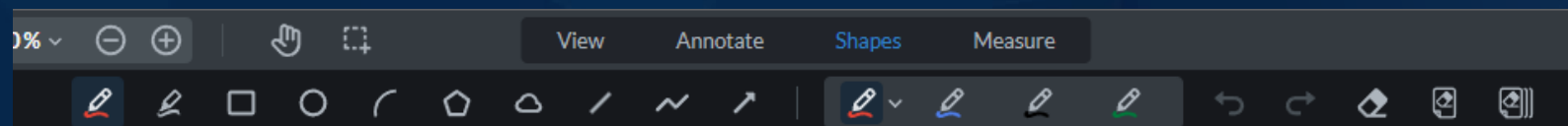
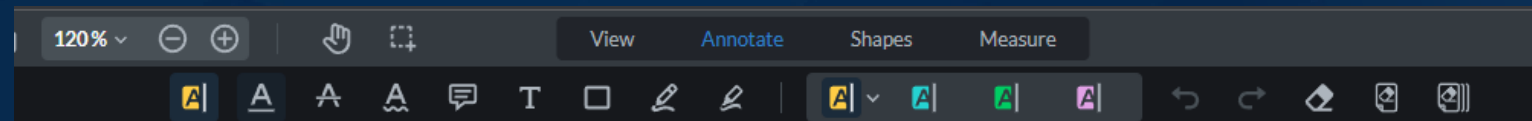
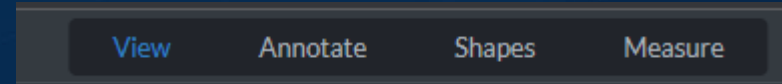


Each training course is made up of modules.



Functions in the digital document

You can highlight and add notes in the training materials.
On the following pages you can see the different functions.



Highlight text Highlighter Underline
Freehand

Aufgabe 3: Auf KEs im Referenz-Viewer zoomen

1. Zeigen Sie das KE **ALIGN_PINS** im Referenz-Viewer an.
2. Klicken Sie mit der rechten Maustaste auf **Cut id 791**, und wählen Sie **Zoomen bis (Zoom To)** aus.
3. Bewegen Sie den Cursor über den KE-Namen im Referenz-Viewer, und beachten Sie, dass das KE in der Mitte des Arbeitsfensters angezeigt wird.

Aufgabe 4: Skizzenbedingungen überprüfen

1. Editieren Sie die Definition von **Cut id 564**.
2. Editieren Sie die interne Skizze.
3. Sehen Sie sich die Skizzenbedingungen an.

Tipps/Tricks/häufige Fehler

- Um Referenzen des KE anzuzeigen, klicken Sie mit der rechten Maustaste auf das KE, und wählen Sie dann "Informationen" (Information) > "Referenz-Viewer" (Reference Viewer) aus.

Functions in the digital document

create notes

The screenshot displays a digital document viewer interface. At the top, a toolbar includes icons for zooming (88%), navigation, and editing. A white arrow points from the text "create notes" to the "T" icon in the toolbar, which represents the text tool. The main content area shows a technical drawing titled "ÜBUNG 2 ► Referenz-Viewer und Skizzierer" with two tasks: "Aufgabe 3: Auf KEs im Referenz-Viewer zoomen" and "Aufgabe 4: Skizzenbedingungen überprüfen". The drawing includes a 3D model of a part and a 2D sketch with dimensions. A red circle highlights the text "Cut id 564" in the task instructions, with a red question mark next to it. A blue callout box with a speech bubble icon points to the "T" icon in the toolbar. The right sidebar shows a "Comments (6)" section with a search bar and a list of comments. The first comment, dated Aug 30, 12:19 PM, reads: "Zeigen Sie das KE ALIGN_PINS im Referenz-Viewer an." The second comment, dated Aug 30, 12:20 PM, reads: "Um Referenzen des KE anzuzeigen". The third comment, dated Aug 30, 12:21 PM, reads: "Diese Übung nochmals durchführen!". Below the comments is an "Add reply..." input field.

Functions in the digital document

The screenshot shows a digital document viewer interface. At the top, there is a toolbar with icons for navigation and search. A search icon is highlighted with a white arrow pointing to it, with the text "Start search" written above it. Below the toolbar, the document content is displayed, featuring two task cards: "Aufgabe 3: Auf KEs im Referenz-Viewer zoomen" and "Aufgabe 4: Skizzenbedingungen überprüfen". To the right of the document, there is a search results panel. The panel has a search bar with the text "Skizze" and a close button. Below the search bar, there are checkboxes for "Case sensitive" and "Whole word". A circular progress indicator and navigation arrows are also present. The search results are listed in a scrollable area. A white arrow points to the search bar with the text "Text input". Another white arrow points to the navigation arrows with the text "Next".

Start search

Text input

Next

Enjoy your Training!



If you have any questions, please contact
training-admin@inneo.com